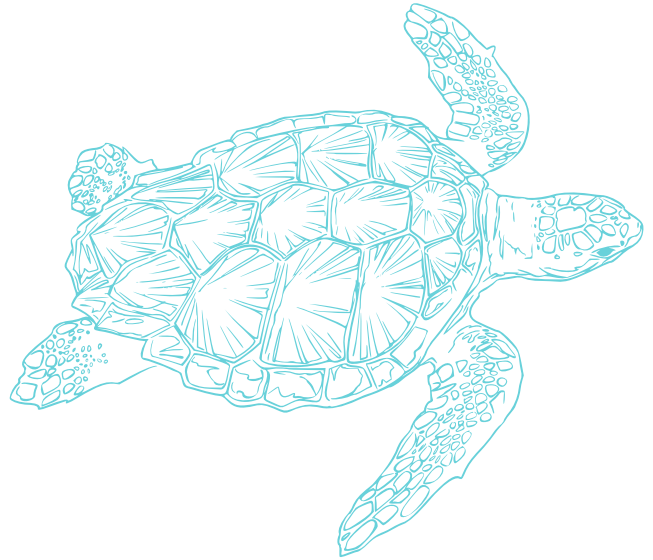


# TURTLE HEROES

Year 4 - Endangered Species



## WARNING - TEACHER/PARENT

*Please watch this video first as there is a scene at 5.22 - 5.37 which may be disturbing to viewers.*

## BACKGROUND TO PROGRAM

We have adapted this excursion to be a virtual excursion. As much as experiencing the environment is the best option, we hope you enjoy this excursion at home.

There are a series of Elements (videos and worksheets) students should work through. This document should give you hints and ideas on how and when to use each element.

Students are developing their knowledge on endangered species - Loggerhead Turtles. Students are then encouraged to understand the turtle's life stages and research what can be done to protect this important endangered species. Edstudio is a great place to start for this Virtual Excursion. However, our [YouTube Channel](#) has a [Playlist](#) just for Year 4. Watch these videos for the best quality.



# USING THE ELEMENTS

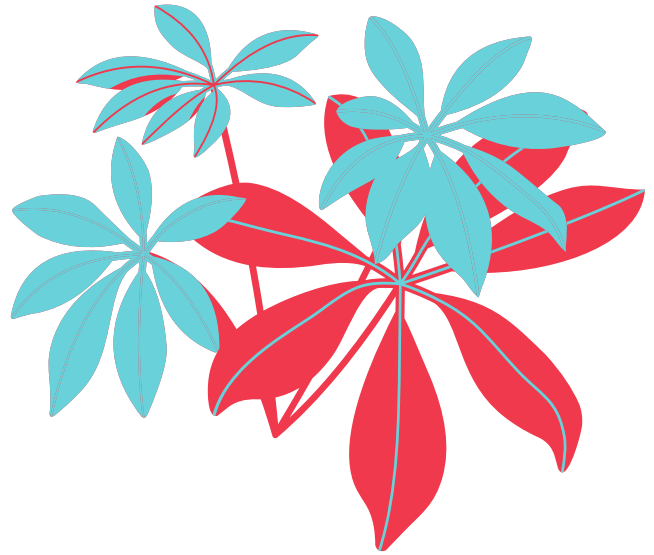
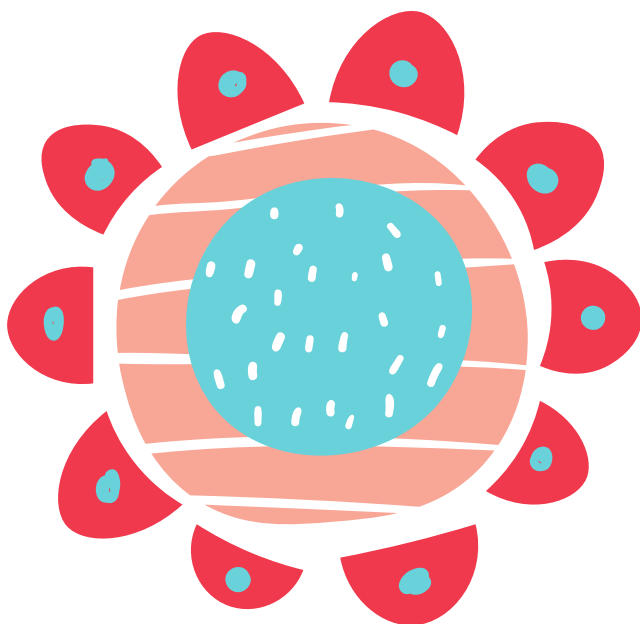
## *Element 1 and 2*

Element 1 is a video. Students are to watch this video as many times as they wish. The students should recognise/recall the life stages of the Loggerhead Turtle, Egg, Hatchling, Juvenile, Adult.

Element 2 is a PowerPoint the students need to create. Students are to choose 1 impact from each of the turtle's life stages.

For Example - Life Stage Adult

- Choose a correct impact from the video (Each life stage may have more than one impact).
- Identify on the PowerPoint (Boat Strike)
- Research ideas on how we (humans) can support Loggerhead Turtles (Go Slow Zones Moreton Bay)
- Add to the PowerPoint; by suggesting what could be done to protect the Loggerhead Turtle from this impact.



## *Element 2*

Safe Research Links for students.

[Turtle Excluder Device \(TED\) for Trawlers.](#)

[Mon Repos - Queensland's Turtle Hatchery.](#)

[Moreton Bay Marine Park](#) - pg 8 defines what a go slow area is. pg 2 - 3 shows the students all the Go Slow locations.

[Ted Talks ED](#) has a great video for background information.

## NOW TO BUILD THE POWERPOINT

Make sure you delete my hints on the powerpoint.

Don't worry if you need the hints after you delete them from the powerpoint they are in the Notes section too.

It would be great if you could add pictures from your own research.

We at the Centre would love any feedback from the students completing this virtual excursion - something 'extra' the student discovered, something the students are interested in learning more about, a scientific question or emailing their completed PowerPoint about Loggerhead Turtles.

email - [socialmedia.nbeec@nudgeebeacheec.eq.edu.au](mailto:socialmedia.nbeec@nudgeebeacheec.eq.edu.au)

**Loggerhead Turtles are an  
Endangered Species - Learn  
How to protect this species.**